

The Original Sunroom Manufacturer Since 1947



OMEGA ROOM PATIO ENCLOSURES



WHY C-THRU IS THE CLEAR CHOICE



C-Thru has been adding space and value to homes since 1947 and with that kind of longevity, comes a commitment to quality above all. Over the last seven decades, we have achieved success by constantly improving our products and services, delivering cutting-edge technology backed by the industry's best warranties.

In 2019, C-Thru was acquired by the Latium USA group of companies. Latium USA's portfolio of companies are known for high quality products that innovate and transform outdoor living spaces while adding value to your largest asset; your home.

C-Thru is a company that prides itself on the values we've nurtured for the last 70+ years, a commitment to localized customer service, and core values that have made choosing American made the very best option. With the backing of an international group of companies, these values are just further enhanced with added peace of mind that you're making the right decision for your home and your family.

BRING THE OUTDOORS INDOORS BEAUTIFULLY

Add A New Dimension To Your Home And Lifestyle

Your home is yours—and you should be able to fully enjoy every square foot of it. Don't let a less-than-welcoming climate or poorly designed backyard keep you from taking every advantage of your own outdoor living space. Wherever you call home, our custom-built home additions are here to make it as spacious, energy-efficient, and beautiful as you've always wanted.

We install fully customized patio enclosures that exceed industry standards for structural integrity, energy efficiency and durability. Whether you want a breakfast nook, home office, greenhouse, or any other type of space, you can count on us to design, manufacture, and install the tailor-made patio enclosure you've always dreamed of.

★★★★★

UPLIFTING!!

The product is superb, the insulation even better than expected, top notch.

Barb E.



★★★★★

SUCH A GREAT ROOM

We have had two holiday parties since it was built and it was exactly the reason we did this room. If you are going with any other company, don't pay too much for a lesser product.

Payton.





EXPAND YOUR LIVING SPACE ENHANCE YOUR LIFE

Front Row Seating For All Of Nature's Wonders

It's safe to say that most of us love being outdoors. On any given day, if we had the choice to relax in front of the TV or to kick back in a comfortable chair outdoors, the answer would be a simple one. Like most of us, the thought of being outside during the dog days of summer or during winter's painfully cold winds and snow, or the incessant attack of bugs, the size of small pets, we will usually opt to remain indoors.

We are proud to offer you a beautiful solution to experiencing the outdoors indoors, all year round! Now you can enjoy beautiful summer and winter days, dramatic sunsets and watch the snow fall from the comfort of a new climate-controlled patio enclosure!





STRAIGHT EAVE PATIO ENCLOSURES

This style of room offers a distinctive look and flexibility that is ideal for most homes and installation parameters. It's all up to you to create a year-round paradise with distinctive lines that will accentuate the existing architecture of any home.

These classic patio enclosures offer you a private place of escape or a special place to entertain – depending on the mood you're in.

We have taken the Patio Room from ordinary to extraordinary! Starting with our insulated roof system, your new room will have a level of year-round comfort not seen in most other patio enclosures.

Plus, with our extensive list of options and upgrades, like, sliding glass doors, French doors, glass kickplates and upper transoms, you can transform your patio enclosure in to a dream come true!

There's an unseen world of beauty waiting for you. Right outside your back door.

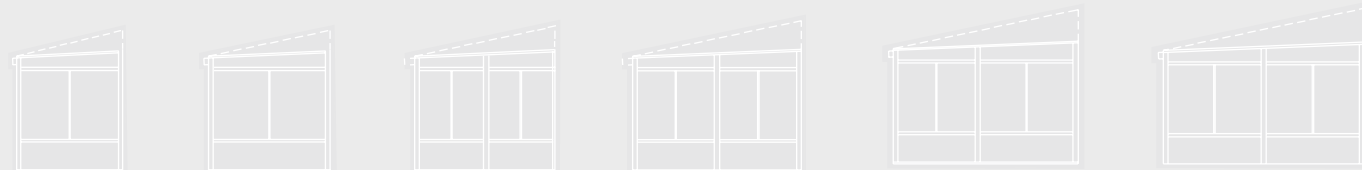
A private, intimate world you can marvel at, alone with your morning coffee, or together with friends and family.

It's there, waiting to be seen. Adding a patio enclosure to your home isn't just a home improvement, it's a lifestyle improvement. One that becomes a focal point of activity, a sunshiny place where everybody feels more comfortable, more peaceful and more energetic.

We have everything you need to create that special place; quality materials, expert workmanship and a limited lifetime warranty. Plus, design flexibility so that you can customize your new living space to suit your specific needs.

DESIGN CONSIDERATIONS

- What direction will the room be facing?
- How much direct sunlight will it get?
- Will you use the room seasonally, or year round?
- Is it large enough for your planned activities?
- What about traffic flow, entrance doors, ceiling fans and electrical outlets?
- Have you decided on a color scheme?
- Which of our patio enclosure styles do you find most appealing?





GABLED EAVE PATIO ENCLOSURES

It's true that the extra living space you can create by adding a "worry-free" patio enclosure makes a beautiful and dreamy retreat for you and your family. Don't be surprised if you find yourself inhabiting your new room more than any room in the house!

By day, you may have just added an expansive kids play room, hobby room or home office. By night, it can be transformed into a magnificent entertainment area or a romantic getaway. [The uses are nearly as endless as the views on a starry night.](#)

10 ROOMS IN 1

- Living Room
- Kids Play Room
- Mud Room
- Hobby & Crafts Room
- Home Gym
- Home Office
- Breakfast Nook
- Family Room
- Spa Room
- Poolside Room

Did we guess the purpose of your new room? Maybe we need to increase our list?

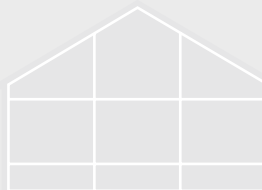
ALL THAT MATTERS...

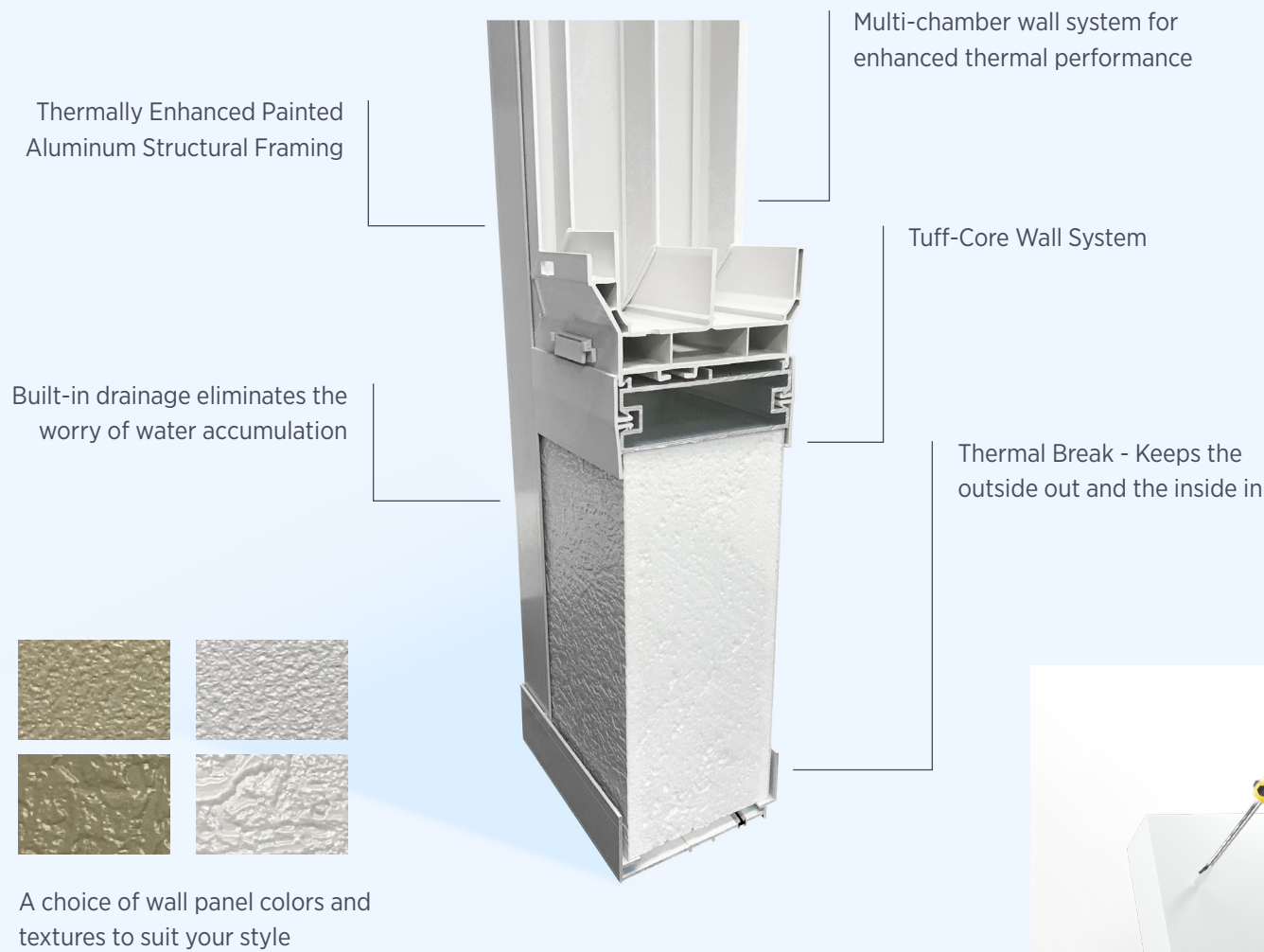
[How would you use your new space?](#)

The choice of a gabled roof offers enhanced charm and grace for your home combined with the added functionality of our highly insulated roof system. Your room will remain bright and inviting, staying cooler in the summer and warmer in the winter.

Your new Garden Room will quickly become the most lived-in room in your entire home. Our customers tell us that it's their morning coffee spot, or their relax and unwind oasis!

Featuring a unique feel with its gable roof design, the vaulted cathedral ceiling and the peaked front wall give a very rich and spacious impression, while allowing plenty of indirect light in. Our gabled patio enclosure is the perfect fit for those wanting extra light, space and value, but with a little more of that traditional "room" feeling.





WHEN YOU'RE BUILDING WALLS WITH WINDOWS, GLASS MATTERS

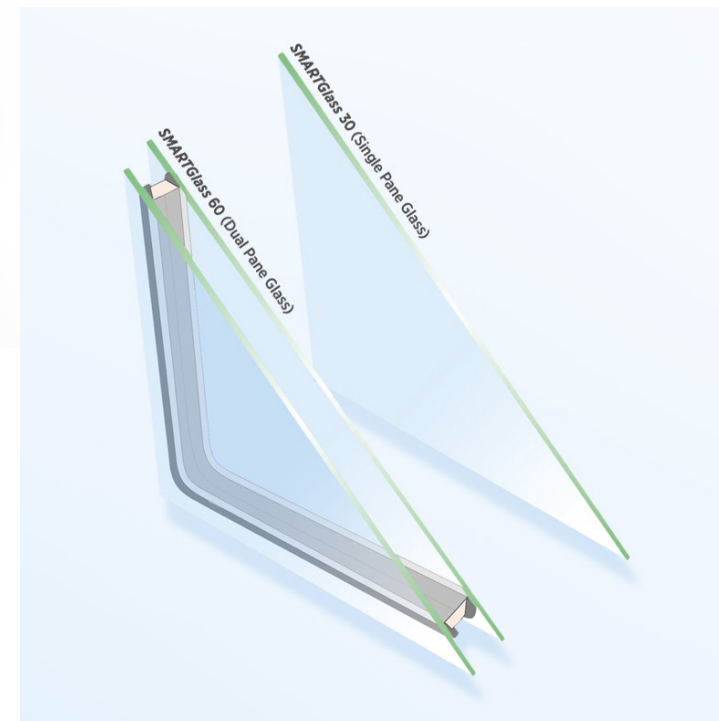
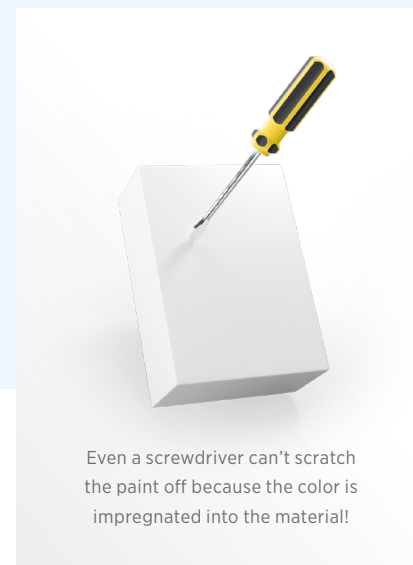
Only The Best

What makes it Smart is the clear, low emissivity coating of silver on the inside of the hermetically sealed glass units. There is no better way to have a comfortable and usable room than to have SMARTGlass.

Our patio enclosures come standard with 1" thick insulated glass units. They are 33-50% thicker than industry standard insulated glass and are the ideal thickness for high performance glass.

It's not just the glass that counts, often what is unseen matters just as much. The spacers between the glass make a huge difference. DURALite spacers are the most advanced energy efficient spacers of their kind. Commonly known as 'warm edge technology', they act as insulators between the outside temperature and you, unlike old school metal spacers. DURALite spacers are comprised of non-metallic structural elements that insulate incredibly well and minimize seal failure, condensation and mold.

*Please refer to the energy chart to select which SMARTGlass is best for you.



SMARTGlass Wall Glass System	U-VALUE	SHADING COEFFICIENT	SOLAR HEAT COEFFICIENT %	VISIBLE LIGHT %	UV %
SMARTGlass 30	1.1	0.99	0.85	90%	74%
SMARTGlass 60	0.27	0.43	0.39	70%	30%

U-Value - Radiant (non solar) heat transfer through the glass measured in BTUs/sq. ft/ hours x delta T. - The lower the number, the better.

Shading Coefficient - An index of solar heat gain rejection. The lower the number, the better.

Solar Heat Gain Coefficient - Similar to shading coefficient. The lower the number, the better.

Visible Light % - The amount of visible light allowed to transfer through the window.

UV% - The % transmission of ultraviolet radiation through the glass unit.

WALL TO WALL FEATURES

As Strong As It Is Beautiful

When constructing patio enclosures, you need a material that is both flexible and strong. Our Tuff-Core Walls are the ultimate all-weather, solid, insulated building panel. Tuff-Core is made of expanded polystyrene, the same material used in freezer walls, refrigerators and coolers. The energy conserved in heating and cooling quickly pays for itself.

The outer Tuff-Core 'skin' is as strong as it is beautiful plus some added benefits:

- Maintenance free
- Flexible and durable
- Moisture-resistant
- Scratch and ding-resistant



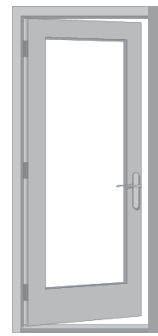
When you see condensation between a dual-pane window, that means the seal has failed. Our exclusive high-performance glass is made using the latest technology in insulated glass seals.



DOOR OPTIONS

There are five door options, all with innovative design features:

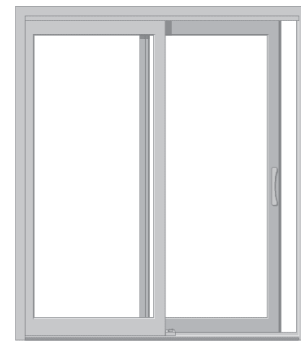
- Swing doors are 1-3/4" thick and come standard with nickel plated hardware.
- Continuous Q-lon weather stripping around door jamb and threshold keeps wind and cold air out.
- The easy-to-operate sliding door is a welded vinyl with continuous weather stripping locking out the weather.
- 3' single door is available with glass or as a solid (no-glass) option.



3' Single Door
(3'0" x 6'8")



6' French Doors
(6'0" x 6'8")



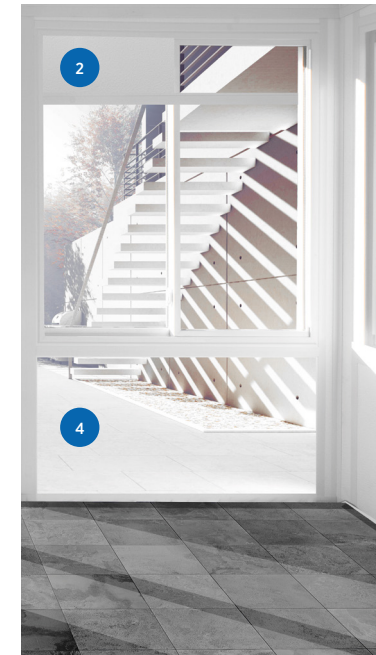
Sliding Doors
(6'0" x 6'8")



Bi-Parting Doors
(12'0" x 6'8")



1. Glass Transom 3. Solid Kick



2. Solid Transom 4. Glass Kick

GLASS KICKPLATE AND TRANSOM OPTIONS

Solid insulated kickplates (area below the window) and transoms (area above the windows) are standard on all rooms. Glass kickplates and transoms are upgrades to the standard room.

- Great way to bring extra light into your room
- Glass kickplates & transom options can be done separately from each other



INSULATED ROOF SYSTEM

HEAVY DUTY INTEGRAL GUTTER
with optional Leaf Guard

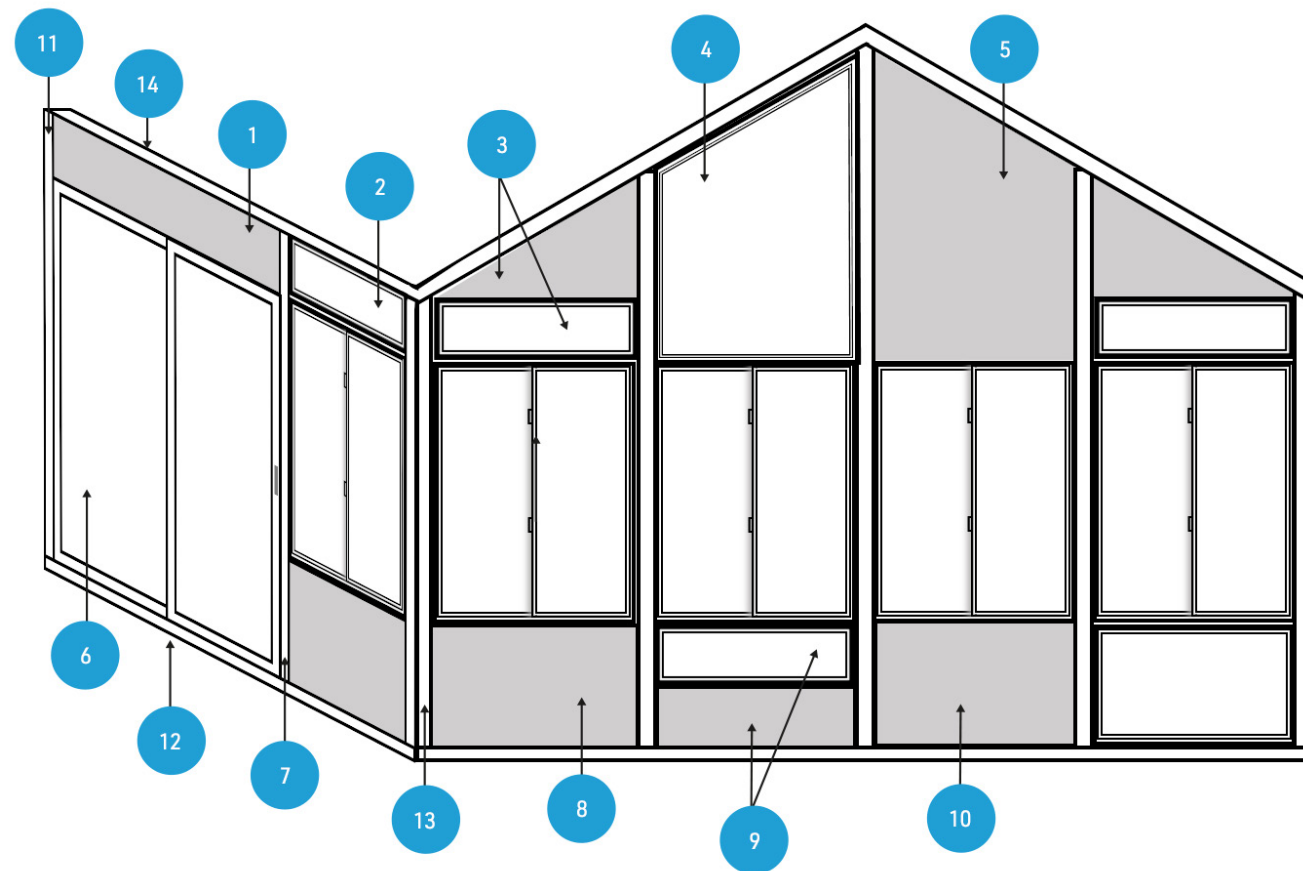
THE C-THRU SOLID INSULATED ROOF SYSTEM

Available in:

- 3" thick roof (ideal for mild to moderate climates)
- 4" thick roof (ideal for mild to moderate climates)
- 6" thick roof (ideal for all climates)



OPTIONAL FAN / CEILING LIGHT BEAM
can be placed throughout the roof to attach fans and lighting while concealing all electrical wiring.



OPTIONS AND FEATURES

At A Price That Makes Sense

- | | | |
|--------------------------|-------------------------------|------------------------------------|
| 1. Solid Transom | 6. Sliding Door | 11. Wall Track |
| 2. Glass Transom | 7. Electrical Utility Mullion | 12. Bottom Track |
| 3. 2 Stage Transom | 8. Operable Window | 13. 90° Corner |
| 4. Glass Gable Trapezoid | 9. 2 Stage Kickplate | 14. Electrical Load Bearing Header |
| 5. Solid Gable Trapezoid | 10. Solid Kickplate | |



REGISTER YOUR WARRANTY ONLINE
CTHRUSUNROOMS.COM/WARRANTY-REGISTRATION

THE ORIGINAL SUNROOM MANUFACTURER
Founded in 1947, C-Thru Sunrooms is one of the oldest sunroom manufacturers in the country. We've achieved success over the last seven decades by constantly improving our products and services, delivering cutting-edge technology backed by the industry's best warranties and the caring touch of a family-owned business. Wherever you call home, our custom-built home additions are here to make it as spacious, energy-efficient, and beautiful as you've always wanted.

CTHRUSUNROOMS.COM

CARE & MAINTENANCE OF YOUR C-THRU PRODUCTS

Not unlike your automobile that you probably wash and service on a regular basis, your C-Thru home improvement product requires regular care and maintenance to get your full value and maximum life out of the products.

CLEANING TIPS:
The primary beauty of your c-thru products is their easy of maintenance. Pollutants film, caused by auto or local plant emissions, can cause an acid like build up on any glass, vinyl or baked enamel surface. This can be easily removed by periodic cleaning with a mild household detergent. Simply mix a few teaspoons of dishwashing liquid in a bucket of warm water and apply liberally with a soft sponge to all exposed surfaces, then rinse freely and dry.

CAUTION: Do not use abrasive or solvent-type materials or paint remover. These materials may soften or remove your baked enamel finish, scratch or fog your glass and remove the uv protective coating from your vinyl.

TO REMOVE MILDEW:
Black spots on the surface of your aluminum or vinyl products may be caused by mildew. Mildew tends to occur in shaded moist surfaces such as beneath eaves or in patio enclosures. Your local grocery store should have premixed mildew remove. Apply per instructions on product label.



LIFETIME LIMITED MATERIAL WARRANTY Certificate



WHAT PRICE DO YOU PLACE ON PEACE OF MIND?

With us, it's simple: the best sunrooms are covered by the industry's best fully transferable lifetime warranty

Another reason to choose C-Thru: We have been manufacturing the highest quality patio enclosures and components for over 70 years. It's this kind of experience coupled with our constant innovation that allows us to confidently offer the industry's most aggressive warranty – for life!



C-Thru Corporate Office
1477 Davril Circle Corona, CA 92880
(951) 363-2457