

ALPHA PLUS

Patio Enclosures



Celebrating Over 70 Years Of Manufacturing Excellence

Why C-Thru Is The Clear Choice

C-Thru has been adding space and value to homes since 1947 and with that kind of longevity, comes a commitment to quality above all. Over the last seven decades, we have achieved success by constantly improving our products and services, delivering cutting-edge technology backed by the industry's best warranties.

In 2019, C-Thru was acquired by the Latium USA group of companies. Latium USA's portfolio of companies are known for high quality products that innovate and transform outdoor living spaces while adding value to your largest asset; your home. One of the largest companies in the Latium USA family is Four Seasons Building Products. Four Seasons Building Products is proud to offer the C-Thru product throughout their network of dealers, ensuring a best-in-class patio room product.

C-Thru is a company that prides itself on the values we've nurtured for the last 70+ years, a commitment to localized customer service, and core values that have made choosing American made the very best option. With the backing of an international group of companies, these values are just further enhanced with added peace of mind that you're making the right decision for your home and your family.

 **FOUR SEASONS**[®]
BUILDING PRODUCTS
A Proud distributor of C-Thru Patio Rooms





Uplifting!!

The product is superb, the insulation even better than expected, top notch - Barb E



Such A Great Room

We have had two holiday parties since it was built and it was exactly the reason we did this room. If you are going with any other company, don't pay too much for a lesser product. - Payton

Bring The Outdoors Indoors Beautifully

Your home is yours—and you should be able to fully enjoy every square foot of it. Don't let a less-than-welcoming climate or poorly designed backyard keep you from taking every advantage of your own outdoor living space. Wherever you call home, our custom-built home additions are here to make it as spacious, energy-efficient, and beautiful as you've always wanted.

We install fully customized patio enclosures that exceed industry standards for structural integrity, energy efficiency and durability. Whether you want a breakfast nook, home office, greenhouse, or any other type of space, you can count on us to design, manufacture, and install the tailor-made patio enclosure you've always dreamed of.

Expand Your Living Space Enhance Your Life





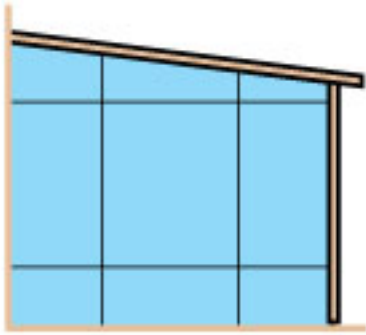
Front Row Seating For All Of Nature's Wonders

It's safe to say that most of us love being outdoors. On any given day, if we had the choice to relax in front of the TV or to kick back in a comfortable chair outdoors, the answer would be a simple one. Like most of us, the thought of being outside during the dog days of summer or during winter's painfully cold winds and snow, or the incessant attack of bugs, the size of small pets, we will usually opt to remain indoors.

We are proud to offer you a beautiful solution to experiencing the outdoors indoors, all year round! Now you can enjoy beautiful summer and winter days, dramatic sunsets and watch the snow fall from the comfort of a new climate-controlled patio enclosure!

Straight Eave Patio Enclosures

This style of room offers a distinctive look and flexibility that is ideal for most homes and installation parameters. It's all up to you to create a year-round paradise with distinctive lines that will accentuate the existing architecture of any home.



These classic patio enclosures offer you a private place of escape or a special place to entertain – depending on the mood you're in.

We have taken the Patio Room from ordinary to extraordinary! Starting with our insulated roof system, your new room will have a level of year-round comfort not seen in most other patio enclosures.

Plus, with our extensive list of options and upgrades, like, sliding glass doors, French doors, glass kickplates and upper transoms, you can transform your patio enclosure in to a dream come true!



There's an unseen world of beauty waiting for you. Right outside your back door.

A private, intimate world you can marvel at, alone with your morning coffee, or together with friends and family.

It's there, waiting to be seen. Adding a patio enclosure to your home isn't just a home improvement, it's a lifestyle improvement. One that becomes a focal point of activity, a sunshiny place where everybody feels more comfortable, more peaceful and more energetic.

We have everything you need to create that special place; quality materials, expert workmanship and a limited lifetime warranty. Plus, design flexibility so that you can customize your new living space to suit your specific needs.

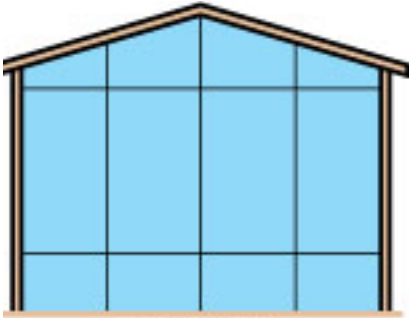
Design Considerations

- What direction will the room be facing?
- How much direct sunlight will it get?
- Will you use the room seasonally, or year round?
- Is it large enough for your planned activities?
- What about traffic flow, entrance doors, ceiling fans and electrical outlets?
- Have you decided on a color scheme?
- Which of our patio enclosure styles do you find most appealing?



Gabled Eave Patio Enclosures

The choice of a gabled roof offers enhanced charm and grace for your home combined with the added functionality of our highly insulated roof system. Your room will remain bright and inviting, staying cooler in the summer and warmer in the winter.



Your new Garden Room will quickly become the most lived-in room in your entire home. Our customers tell us that it's their morning coffee spot, or their relax and unwind oasis!

Featuring a unique feel with its gable roof design, the vaulted cathedral ceiling and the peaked front wall give a very rich and spacious impression, while allowing plenty of indirect light in. Our gabled patio enclosure is the perfect fit for those wanting extra light, space and value, but with a little more of that traditional "room" feeling.



It's true that the extra living space you can create by adding a "worry-free" patio enclosure makes a beautiful and dreamy retreat for you and your family. Don't be surprised if you find yourself inhabiting your new room more than any room in the house!

By day, you may have just added an expansive kids play room, hobby room or home office. By night, it can be transformed into a magnificent entertainment area or a romantic getaway. The uses are nearly as endless as the views on a starry night.

10 Rooms in 1

Living Room

Home Gym

Family Room

Kids Play Room

Home Office

Spa Room

Mud Room

Breakfast Nook

Poolside Room

Hobby & Crafts Room

Did we guess the purpose of your new room?

Maybe we need to increase our list?

ALL THAT MATTERS...

How would you use your new space?



Wall To Wall Features

When constructing patio enclosures, you need a material that is both flexible and strong. Our Tuff-Core Walls are the ultimate all-weather, solid, insulated building panel. Tuff-Core is made of expanded polystyrene, the same material used in freezer walls, refrigerators and coolers. The energy conserved in heating and cooling quickly pays for itself.

The outer Tuff-Core 'skin' is as strong as it is beautiful plus some added benefits:

- Maintenance free
- Flexible and durable
- Moisture-resistant
- Scratch and ding-resistant



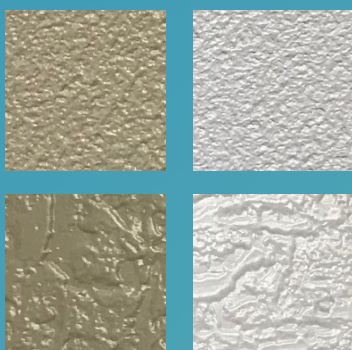
Even a screwdriver can't scratch the paint off because the color is impregnated into the material!



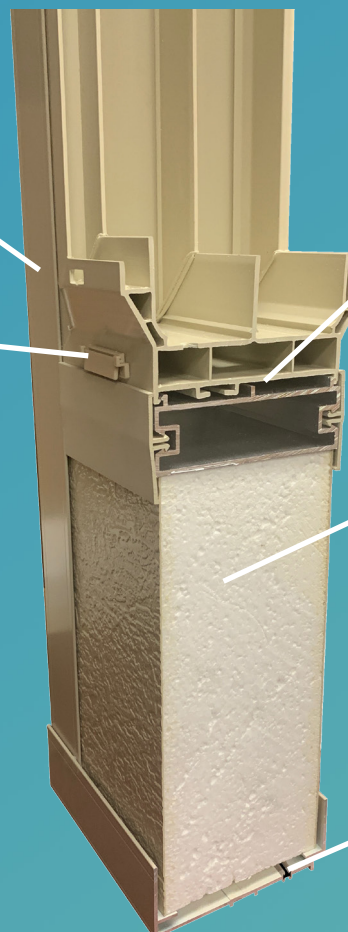
Our utility-H allows you to place outlets as needed, without unsightly conduits or extension cords.

Thermally Enhanced
Painted Aluminum
Structural Framing

Built-in drainage
eliminates the
worry of water
accumulation



A choice of wall panel colors
and textures to suit your style



Multi-chamber wall
system for enhanced
thermal performance

Tuff-Core Wall System

Thermal Break -
Keeps the outside out
and the inside in

When You're Building Walls With Windows, Glass Matters

SMARTGlass Wall Glass System

What makes it Smart is the clear, low emissivity coating of silver on the inside of the hermetically sealed glass units. There is no better way to have a comfortable and usable room than to have **SMARTGlass**.

Please refer to the energy chart to select which **SMARTGlass** is best for you.

Our patio enclosures come standard with 1" thick insulated glass units. They are 33-50% thicker than industry standard insulated glass and are the ideal thickness for high performance glass.

It's not just the glass that counts, often what is unseen matters just as much. The spacers between the glass make a huge difference.

DURALite spacers are the most advanced energy efficient spacers of their kind. Commonly known as 'warm edge technology', they act as insulators between the outside temperature and you, unlike old school metal spacers.

DURALite spacers are comprised of non-metallic structural elements that insulate incredibly well and minimize seal failure, condensation and mold.

When you see condensation between a dual-pane window, that means the seal has failed. Our exclusive high-performance glass is made using the latest technology in insulated glass seals.

| SMARTGlass Wall Glass System | U-VALUE | SHADING COEFFICIENCY | SOLAR HEAT GAIN COEFFICIENCY | VISIBLE LIGHT % | UV% |
|--|---------|----------------------|------------------------------|-----------------|-----|
| SMARTGlass 30 | 1.1 | .99 | .85 | 90% | 74% |
| SMARTGlass 60 | .27 | .43 | .39 | 70% | 30% |

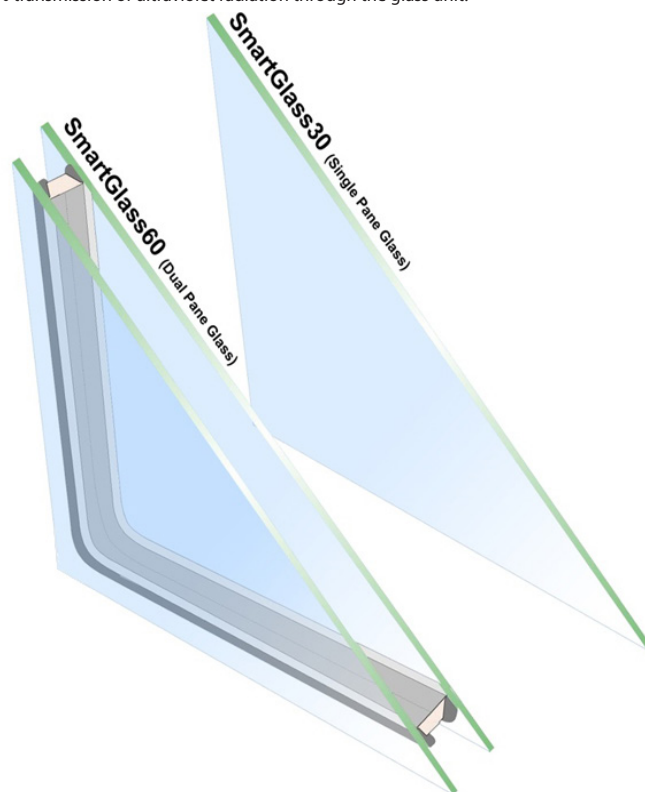
U-Value - Radiant (non solar) heat transfer through the glass measured in BTUs/sq. ft./hours x delta T. - The lower the number, the better.

Shading Coefficient - An index of solar heat gain rejection. The lower the number, the better.

Solar Heat Gain Coefficient - Similar to shading coefficient, the lower the number, the better.

Visible Light % - The amount of visible light allowed to transfer through the window.

UV% - The % transmission of ultraviolet radiation through the glass unit.



Metal Window Spacer may cause condensation and toxic mold



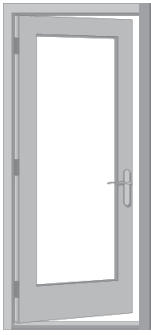
DuraLite Warm Edge Spacer = no condensation

Open To The Possibilities

Door Options

There are five door options, all with innovative design features:

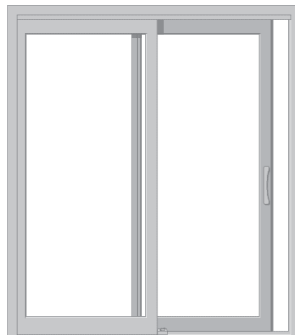
- Swing doors are 1-3/4" thick and come standard with nickel plated hardware.
- Continuous Q-lon weather stripping around door jamb and threshold keeps wind and cold air out.
- The easy-to-operate sliding door is a welded vinyl with continuous weather stripping locking out the weather.
- 3' single door is available with glass or as a solid (no-glass) option.



3' Single Door
(3'0" x 6'8")



6' French Doors
(6'0" x 6'8")



Sliding Doors
(6'0" x 6'8")



Bi-parting Doors
(12'0" x 6'8")

Glass Kickplate and Transom Options

Solid insulated kickplates (area below the window) and transoms (area above the windows) are standard on all rooms. Glass kickplates and transoms are upgrades to the standard room.

- **Great way to bring extra light into your room**
- **Glass kickplates & transom options can be done separately from each other**



How Do We Top All Of That?

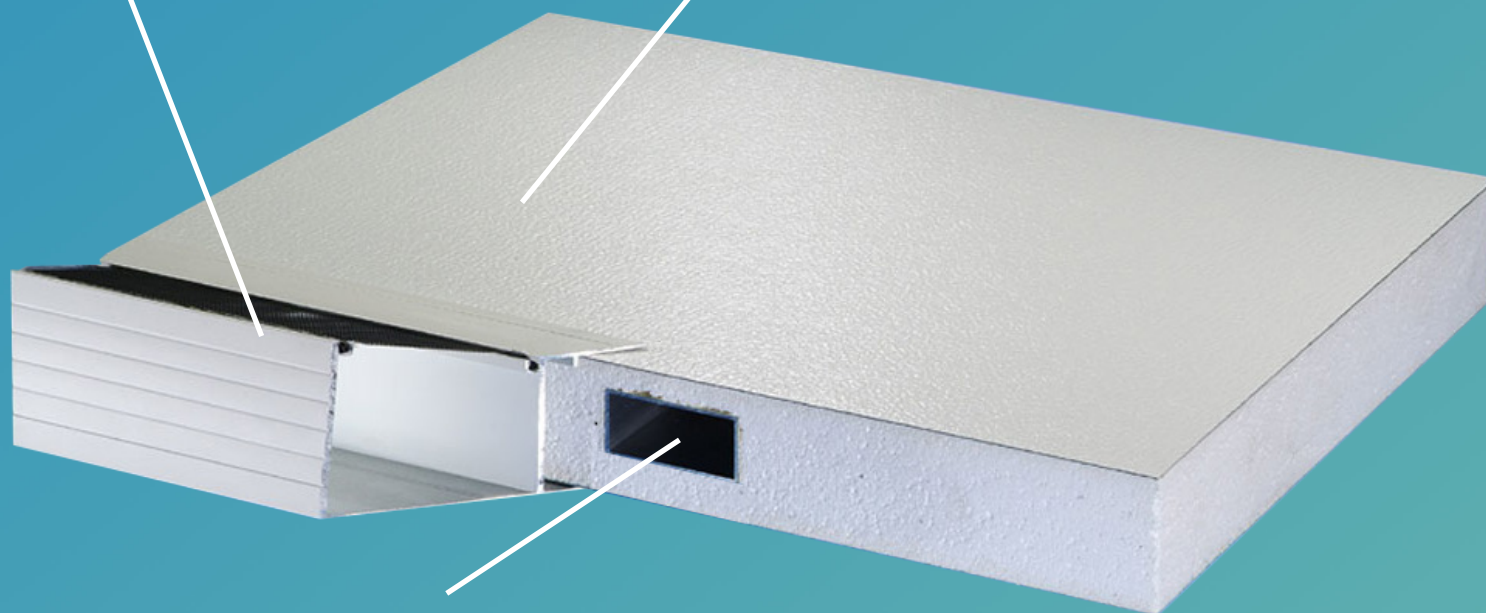
Insulated Roof System

Heavy Duty Integral Gutter with optional Leaf Guard

The C-Thru Solid Insulated Roof System

Available in:

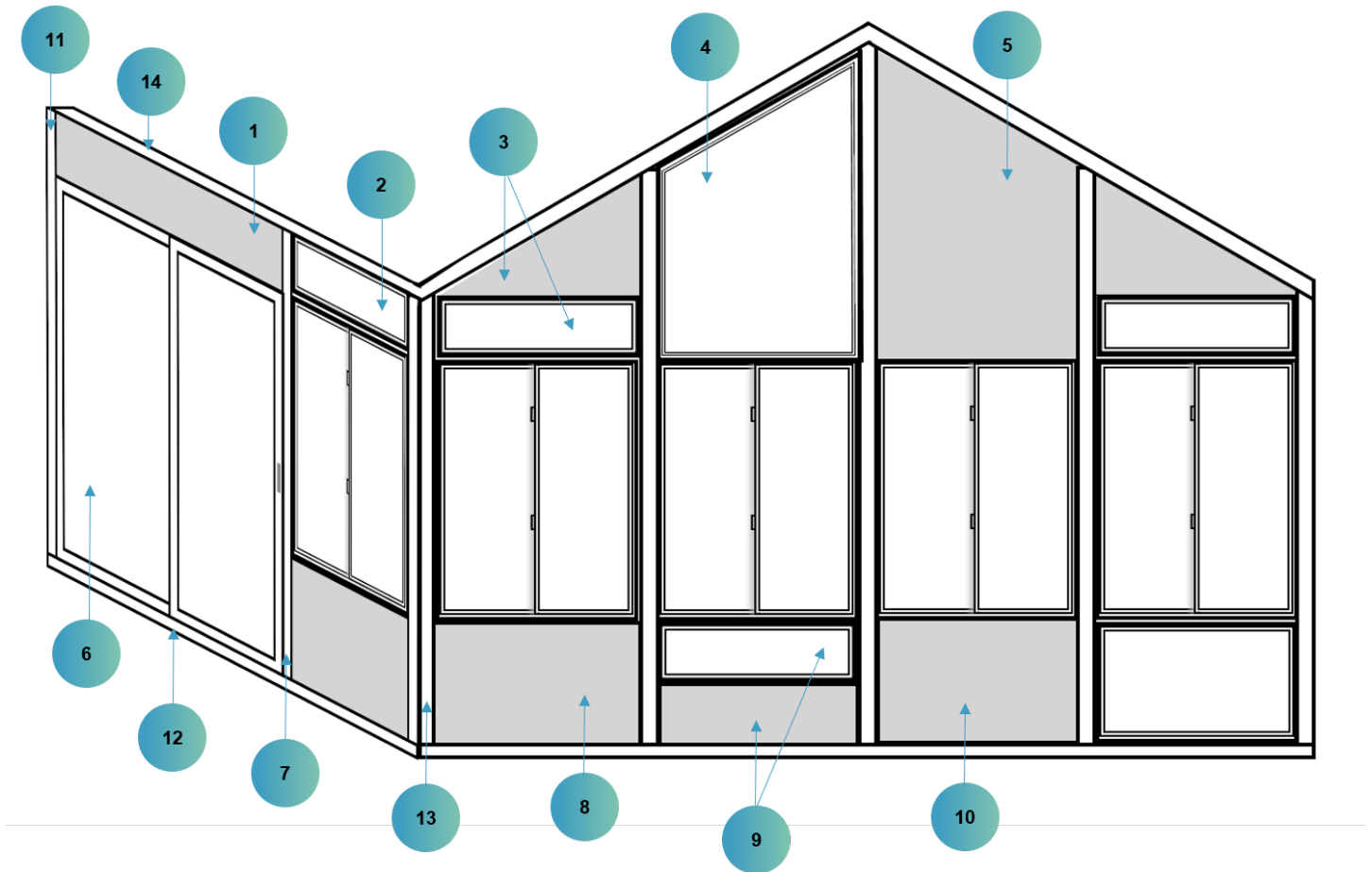
- 3" thick roof (ideal for mild to moderate climates)
- 4" thick roof (ideal for mild to moderate climates)
- 6" thick roof (ideal for all climates)



Optional Fan / Ceiling Light Beam can be placed throughout the roof to attach fans and lighting while concealing all electrical wiring.



Options And Features At A Price That Makes Sense



1. Solid Transom
2. Glass Transom
3. 2 Stage Transom
4. Glass Gable Trapezoid
5. Solid Gable Trapezoid
6. Sliding Door
7. Electrical Utility Mullion

8. Operable Window
9. 2 Stage Kickplate
10. Solid Kickplate
11. Wall Track
12. Bottom Track
13. 90° Corner
14. Electrical Load Bearing Header

What Price Do You Place On Peace Of Mind?

Another reason to choose C-Thru: We have been manufacturing the highest quality patio enclosures and components for over 70 years. It's this kind of experience coupled with our constant innovation that allows us to confidently offer the industry's most aggressive warranty – for life!

LIFETIME LIMITED MATERIAL WARRANTY

Products Covered by This Warranty:

Sunrooms, Garden Rooms, Patio Enclosures, Windows, Doors and Patio Covers manufactured or supplied by C-Thru Industries.

Terms of Warranty: (Effective on purchases made beginning 1-1-13)

This Lifetime Limited Material Warranty is to the original retail purchaser of the C-Thru products. This warranty is for the material (hereinafter referred to as the "Products") only. This warranty does not include costs of removal, reinstallation, shipping or handling of any replacement parts unless specifically implied herein.

- 1) Painted aluminum parts will not peel, blister, flake, chip, split, rust or crack subject to the limitations and conditions listed herein for the life of the original purchaser. The term "crack" as used herein shall not include minute fracturing of the Products which may occur in the fabrication of the Products.
- 2) Hardware and Weather-Strip items used in the manufacture of the enclosure windows and doors, will be free from defects and that under normal use will not fail or render Products unserviceable subject to the limitations and conditions listed herein for the life of the original purchaser.
- 3) Vinyl Extrusions and Vinyl Thermal Cladding will be free from defects and that under normal use will not fail or render Products unserviceable subject to the limitations and conditions listed herein for the life of the original purchaser.
- 4) Laminated Roof Panels and laminated wall panels will be free from defects and that under normal conditions and use will not delaminate for a period of fifteen (15) years after the date of purchase and subject to the limitations and conditions listed herein.
- 5) Insulated Glass Panels under normal conditions and use are warranted not to fail for a period of twenty (20) years after the date of purchase and subject to the limitations and conditions listed herein.
- 6) All Glass Panels shall be warranted against incidental breakage for the life of the original purchaser.

Parts or equipment that have become obsolete or discontinued are not covered by this limited warranty. These obsolete or discontinued items can include, but are not limited to, glass types, glass sizes, paneling types, extrusion color, etc.

C-Thru is giving you an expressed Lifetime Limited Material Warranty under the provisions of the Magnuson-Moss Federal Warranty Act. C-Thru cannot and shall not be liable to you for breach of any other written or oral expressed or implied warranties, such as those, if any, given to you by dealers, contractors, applicators or distributors.

All warranty claims must first be presented to the original dealer, contractor, applicator or distributor from whom the C-Thru Product was purchased.

Transference:

This Lifetime Limited Material Warranty is fully transferrable. To qualify for transfer, the new owner must send written request for warranty transfer to C-Thru Industries within 60-days of sale of the property.

Notice and Inspection:

If you think your products contain manufacturing defects, written notice of any claimed defect shall be sent to C-Thru Industries at 1477 Daveril Circle, Corona, CA 92880, within thirty (30) days of first discovering a claimed defect. The notice shall describe the defect claimed, the work order or contract number, date product was installed, address of the installed product and name, address and phone number of the contractor, applicator or distributor who either installed or sold you the product. C-Thru Industries shall then be given a reasonable time in which to inspect said defect. Any repairs or attempted repairs made before inspection by C-Thru may void the terms of this warranty.

Remedies and Prorations:

If after inspection, it is determined by C-Thru that the said defect is covered under this warranty, then C-Thru shall have one hundred twenty (120) days in which to correct said defect, by either refinishing, or replacing the defective material. C-Thru shall not be liable in any event for any shipping, handling, labor, removal or installation cost to remedy the defective product unless specifically implied herein. All replacement material is furnished F.O.B. Corona, CA.

During the first year after installation of the product, C-Thru will pay for any labor charges (reasonable and customary) associated with the removal and installation of any defective component covered under this Lifetime Limited Material Warranty subject to the limitations and conditions listed herein. Shipping and handling costs are not covered by C-Thru Industries. C-Thru Industries will have the option of selecting the contractor to furnish the labor in correcting the defect.

Exclusions and Limitations:

This warranty applies only to products erected within the United States and Canada. C-Thru Industries does not control the installation of its products and does not warrant against conditions arising from defective or inappropriate installation. C-Thru cannot be responsible for damages from causes outside of its control and does not warrant against damage from earthquake, lightning, hail, hurricane, tornado, hailstorm, wind borne objects, flooding or other acts of God; fire, vandalism, riot, insurrection, civil disorder or contact with harmful chemicals, fumes, vapors or salt spray directly applied to the atmosphere, settlement, distortion, warping, failure or cracking of the structure to which the product is affixed or any changes or additions thereto; abuse, misuse or failure to provide reasonable maintenance of the product or changes in the product due to normal weathering process. This Lifetime Limited Material Warranty is not applicable to products installed beyond the design limits set by the manufacturer. The warranty does not cover fading or chalking of any painted finish or other surface.

Any repair, refinishing, replacement or payment shall not extend the original warranty period. This warranty shall not be valid or enforceable unless it is registered with C-Thru Industries within thirty (30) days after completion of installation of the products covered hereby using the online registration process at www.cthrusunrooms.com/warrantyreg.aspx. If any statement on the online registration form does not contain the true name, address, phone number and other pertinent information of the original purchaser, this warranty shall not be valid or enforceable.

We accept no obligations or liabilities for incidental and consequential damages for the breach of any expressed or implied warranty of merchantability, arising out of or in connection with the use, performance, or other indirect damages with the respect to loss of property, revenues or profit, or the removal, installation or reinstallation. No representative or other person is authorized to offer any other warranty, or assume any other liabilities, on behalf of C-Thru Industries.

This warranty is strictly limited to the products as outlined herein and shall not apply to failure, leaks or consequential damages caused by mis-application of the products. This warranty does not apply to the products that are not furnished and produced by C-Thru Industries.

Legal Rights:

Some states do not allow the exclusion or limitation of consequential damages, so the above limitations or exclusions may not apply to you.

WARRANTY HIGHLIGHTS

- Lifetime Warranty
- Transferable
- Incidental Glass Breakage
- 20 year Warranty on Insulated Glass
- and More...

